

Cut videos quickly with LosslessCut

LosslessCut is free and available for Windows, Linux and Mac. It can be used to quickly remove the beginning, end and voiceover in a recording, split a video into several short videos or combine several short videos into one long one.

The particular advantage is that Lossless Cut can edit video files losslessly. With the right settings, exporting the edited result is many times faster than with standard video editing programs. It takes just a few minutes.

Overview

Cut videos quickly with LosslessCut	1
<i>Install LosslessCut</i>	<i>2</i>
<i>Basics: Operating LosslessCut.....</i>	<i>2</i>
Open and play a single video in LosslessCut.....	2
Cut and remove sequences	4
Naming and sorting segments	5
Exporting one or more final videos	6
<i>Practical settings.....</i>	<i>8</i>
<i>Application scenarios</i>	<i>9</i>
Prepare 90-minute video from the Zoom Cloud for ILIAS, KITopen or YouTube	9
Divide 90-minute video into themed clips.....	10
Combine several video sequences into one video	13
Replace a sequence from an old lecture video with a newer sequence	16
<i>Troubleshooting.....</i>	<i>19</i>
Loading the file and/or exporting takes a noticeably long time	19
Cancellation of the loading process when pulling in several videos	19
<i>Next steps.....</i>	<i>19</i>
<i>Infos & contact</i>	<i>19</i>
Last update 14.07.2021	19
License notice	19
Impressum.....	19

Important notes are marked in yellow.

Additional information is marked in blue.

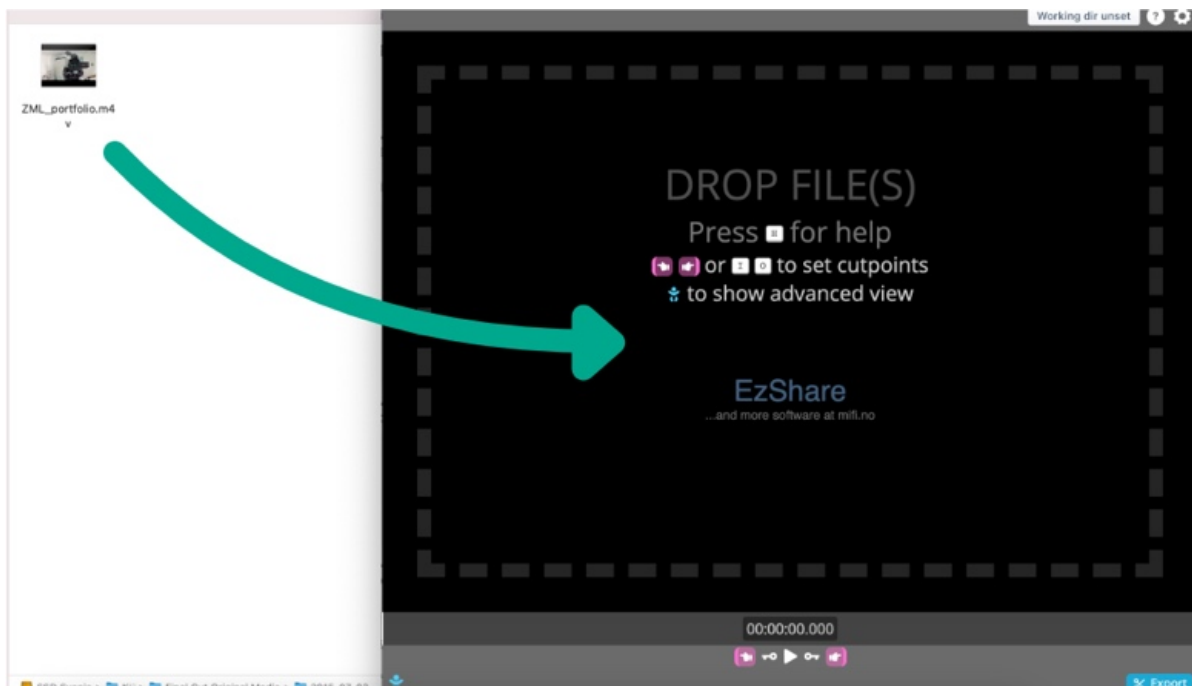
Install LosslessCut

The current version of the program is available free of charge on GitHub: <https://github.com/mifi/lossless-cut/releases>. Alternativ kann sie auch im Apple App Store oder anderen Softwreshops gekauft werden, um die Weiterentwicklung finanziell zu unterstützen.

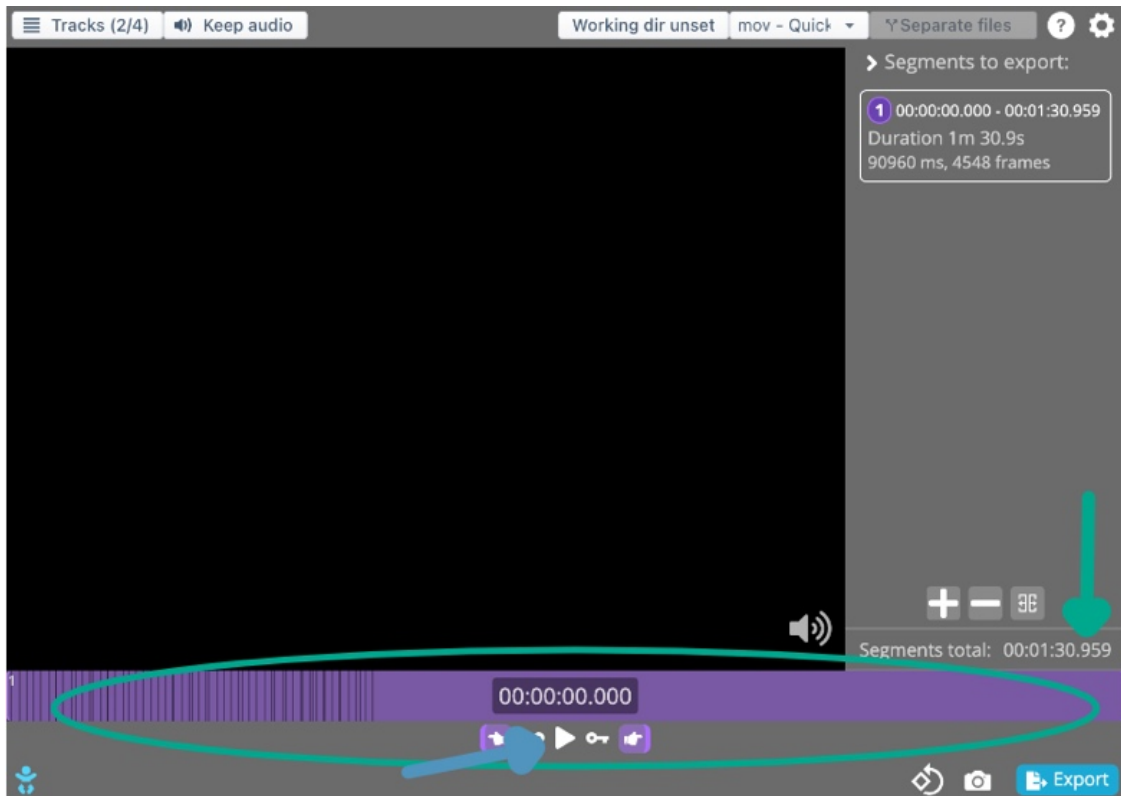
Basics: Operating LosslessCut

Open and play a single video in LosslessCut

After opening the program, you can drag the self-made video into the program.



The video is now in the program and its length is displayed at the bottom as a colored bar. The video length is displayed at the bottom right (green arrow). If you click on the play button (blue arrow) in the middle below the video, you can play it up to the desired point from which the final video should start.



The arrow keys on the keyboard can be used to fast-forward and rewind the video.
Playback can also be started and paused by pressing the space bar.

Cut and remove sequences

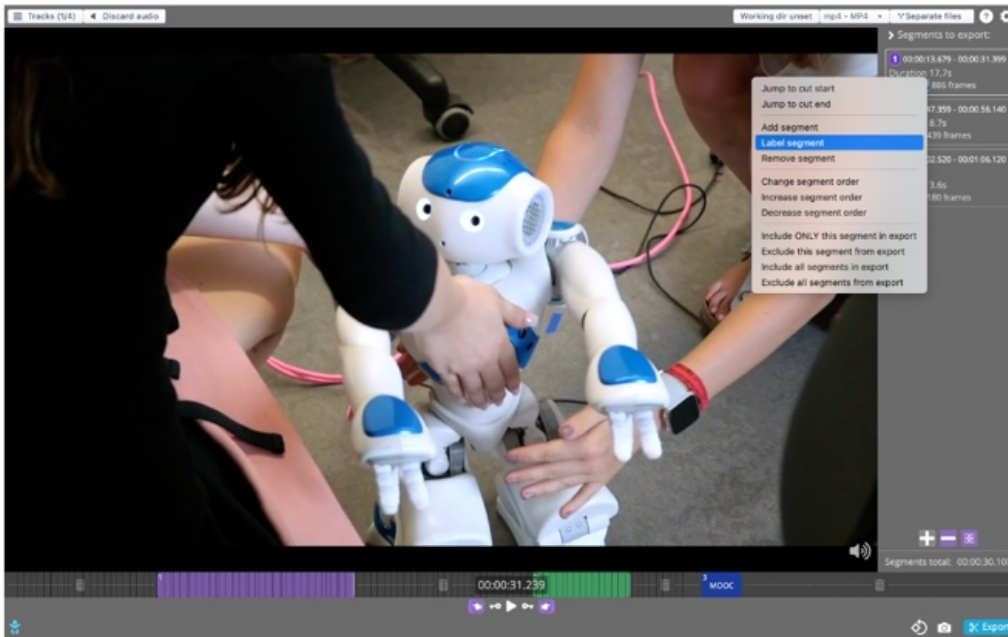
To remove the beginning and end, click in the colored bar at the point where you want the final video to start and press the I (in) key on the keyboard. Mark the point where you want it to end and press the O (out) key.



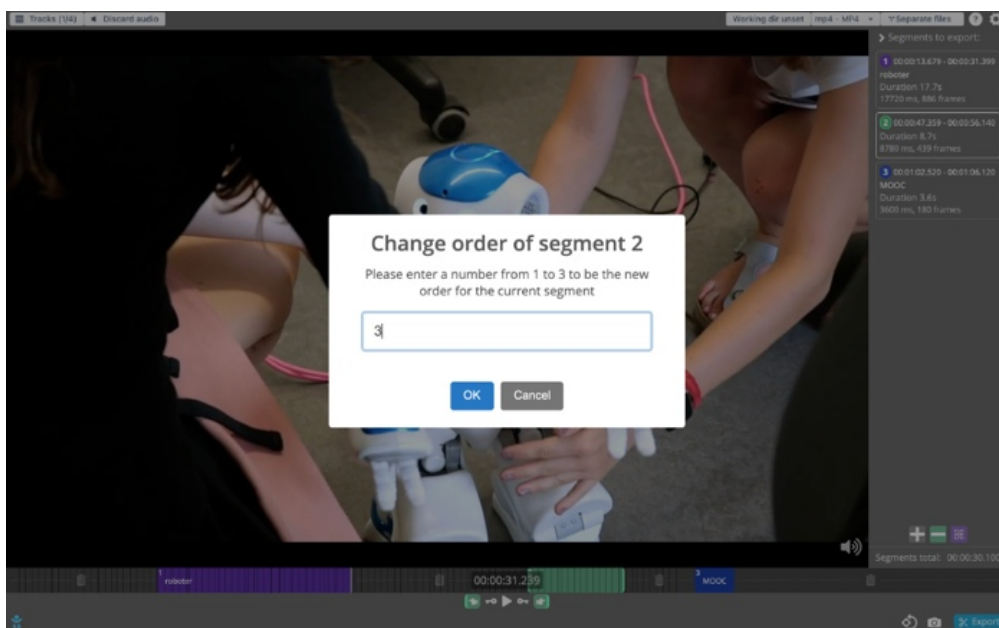
To cut out pauses, bloopers and the like, use the mouse to mark the point from which a part is to be cut out. Then click on the cut symbol under the segment menu (red circle). The bar under the video view then changes color behind the cut point. Now click on the point from which the final video should start again and then click on the cut symbol again. The part between the two cuts can now be marked and deleted using the delete button.

Naming and sorting segments

After cutting, you now have various segments. Each segment appears on the right in the segments menu with a position number. You can give these segments names by selecting a clip in the right-hand menu and right-clicking on "label segment". Now enter a suitable name.



You can change the order of the segments in the same way by right-clicking to open the menu and clicking on "Change segment order". Enter the number of the desired position.



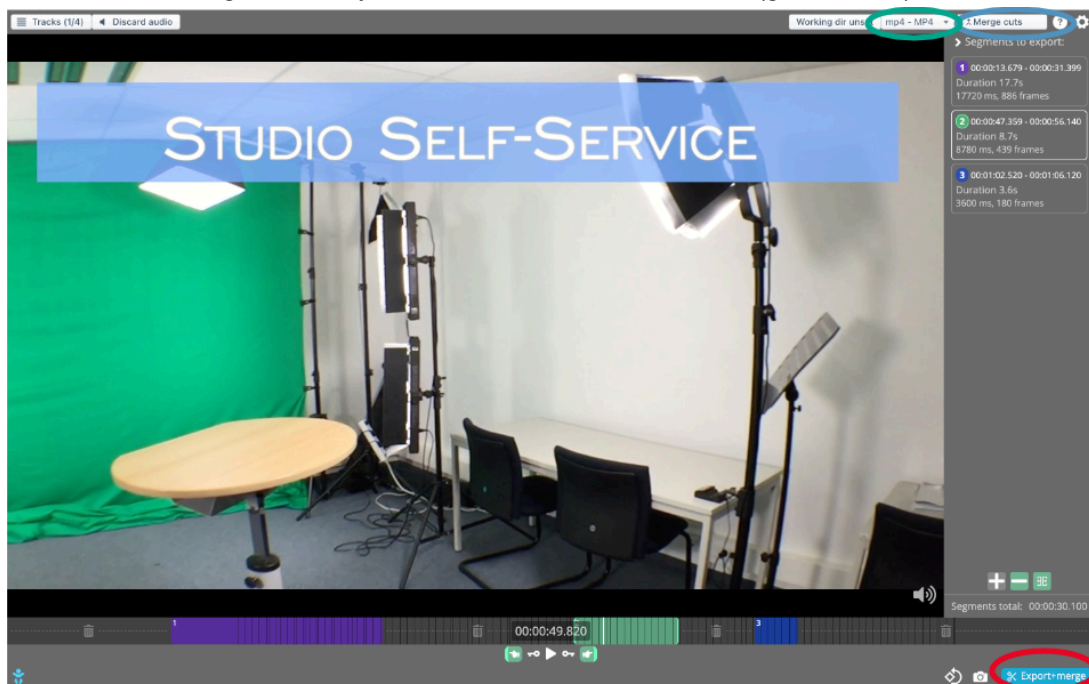
The new position is displayed in the segment menu, but not in the bar below the video view.

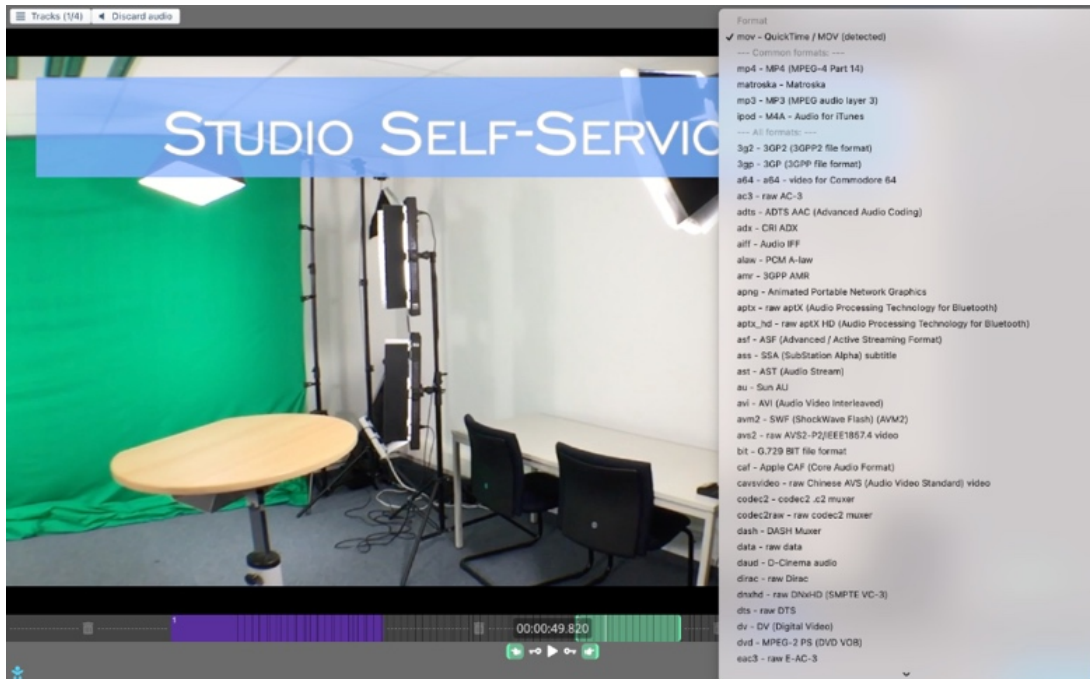


Exporting one or more final videos

Once all unwanted parts have been removed and the segments are in the correct order, the final video can be exported. On the one hand, an entire video can be exported by setting "merge" at the top (see blue circle) and then clicking on the export button at the bottom. On the other hand, the segments can also be exported as individual video clips. To do this, select "separate" at the top (see blue circle) and click on Export at the bottom.

In addition to the "merge button", you can also set the video format (green circle).





We recommend exporting the video as MP4. There is no loss of quality, the export does not take long and it is the most common format for video players and platforms.
Then export the video by clicking on the button at the bottom right (red circle in the first image).

Practical settings

In the bottom left corner is a button that resembles a baby (red circle). Clicking on it takes you to the expanded view. In the expanded view, more buttons with functions are displayed.

In the photo you can see the additional buttons marked by green circles. In the program, you can see the functions of these buttons by moving the mouse slowly over them.



For example, preview images and the display of the audio track are very useful functions. Both functions help you to orientate yourself better in the video and to find places that need to be cut more easily. To enlarge the audio track, press Ctrl and move the mouse wheel or use the scroll/zoom function on your laptop.

Application scenarios

Prepare 90-minute video from the Zoom Cloud for ILIAS, KITopen or YouTube

Would you like to cut out the beginning, the end and any pauses or bloopers in between?

Drag the desired video into LosslessCut as described above.

You can now click on the point in the colored bar where you want the video to start. Then press the I key on the keyboard. Now click on the point where you want the video to end and press the O key. The colored area between the markers is the video segment that will be exported later.

If you now want to cut out any pauses or pauses in the middle of the video, click with the mouse on the point before the pause and press O. Then jump to the point after the pause and press the I key. You will then see several segments under the video preview. The gray areas between the segments will not appear later in the video when you export it.



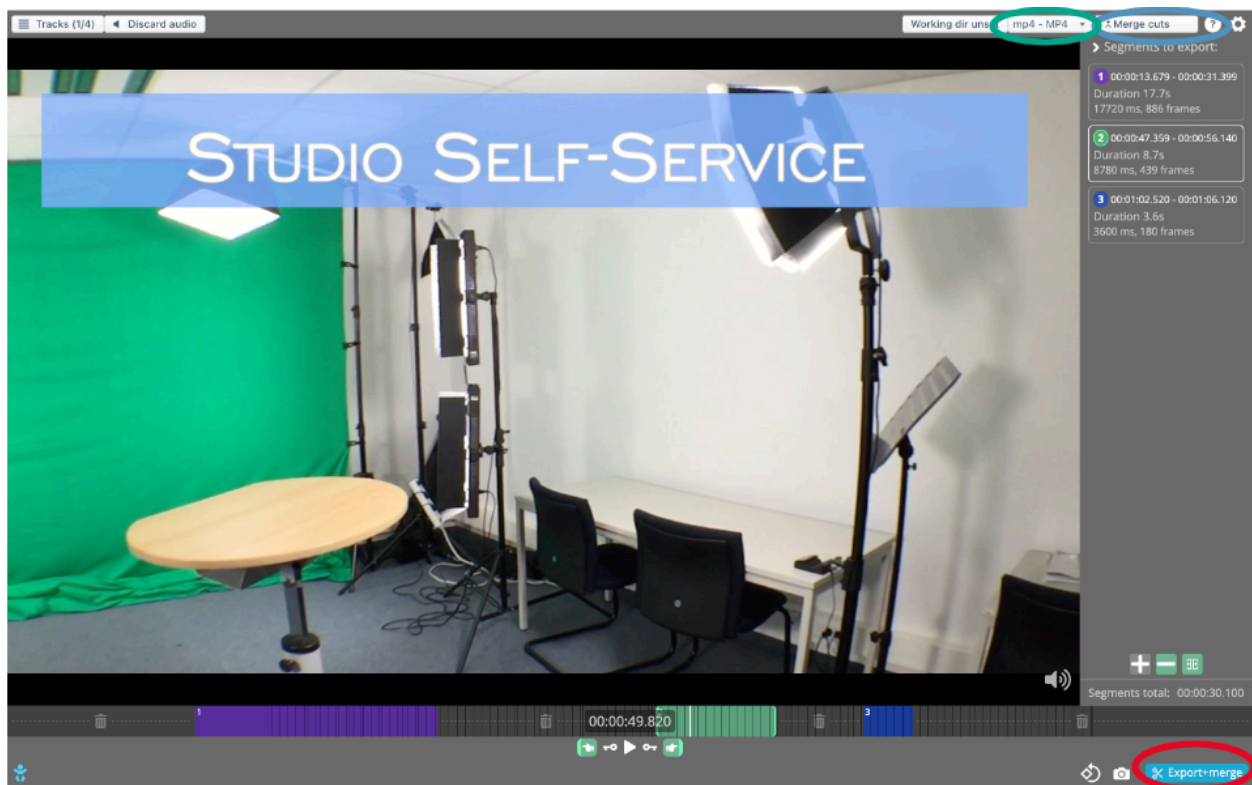
A video sequence is to begin:

Click on the desired starting point and press I (for in).

A video sequence is to end:

Click on the desired end point and press O (for out).

To export an entire lecture video, make sure that you have selected "merge" (blue circle) in the top right-hand corner. This will merge all segments into one video.



By clicking on the button (green circle) directly to the left, you can select the format in which the video should later be available. MP4 is the most common format. Then click on "Export" (red circle at the bottom right) at the bottom right.

Within a short time, the video will be saved in the file directory of the original video, unless otherwise set.

Divide 90-minute video into themed clips

Would you like to divide the long lecture video into shorter clips on individual topics or chapters?

Proceed as follows:

Drag the desired video into LosslessCut as described above.

In the colored bar, you can now click on the position where you want the first video clip to start. Then press the I key on the keyboard.

Now click with the mouse on the point where you want the first video clip to end and press the O key. The colored area between the markers is the video segment that will be exported later.

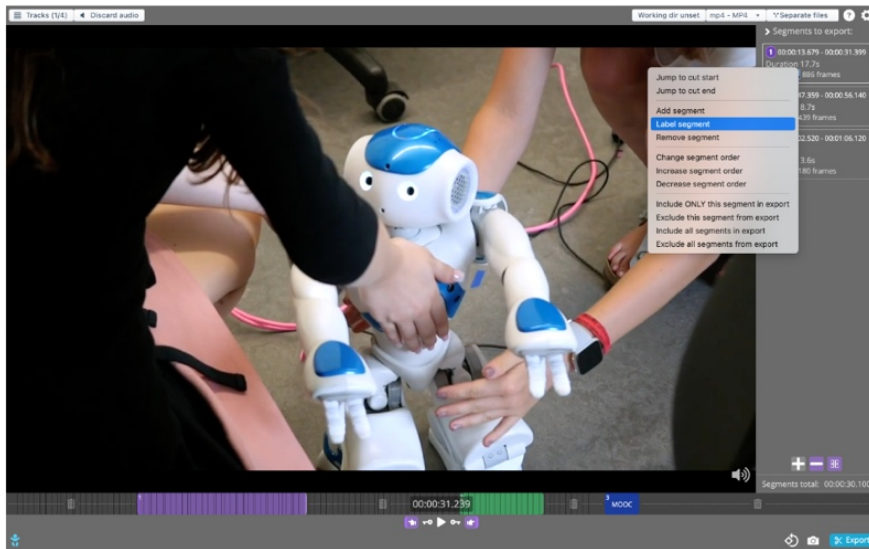
The bar below the video will turn gray after this segment. You can still click in and select the point at which the second clip should start and press the I button again.

Proceed with the other clips in the same way as with the first clip.

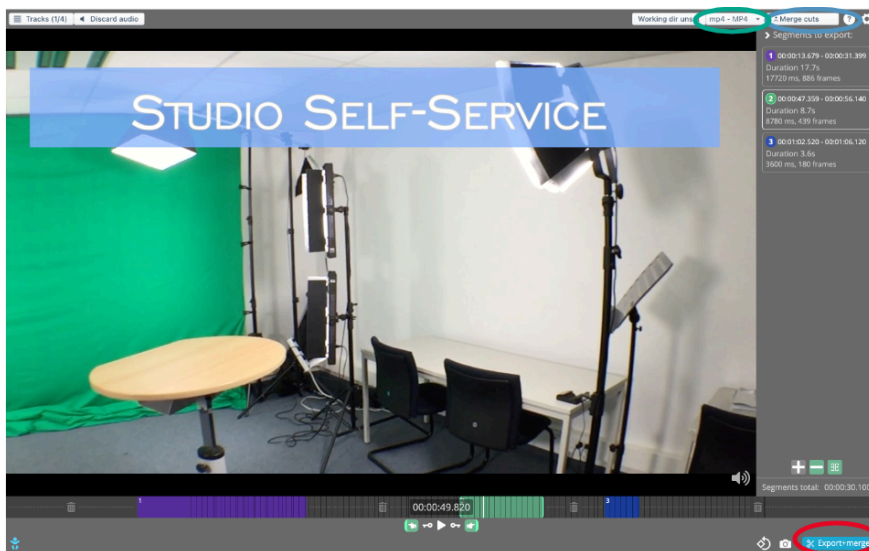


A video sequence is to begin:
Click on the desired starting point and press I (for in).
A video sequence is to end:
Click on the desired end point and press O (for out).

You now have various segments that will later be saved as individual clips. You can give these clips names by selecting a clip in the right-hand menu and selecting "Label segment" after right-clicking. Now enter a suitable name.



To export an entire lecture video, make sure that you have selected "separate" (blue circle) in the top right-hand corner. This will turn the individual segments into individual video files.



By clicking on the button (green circle) directly to the left, you can select the format in which the clips should later be available. MP4 is the most common format. Then click on "Export" (green circle at the bottom right) at the bottom right.

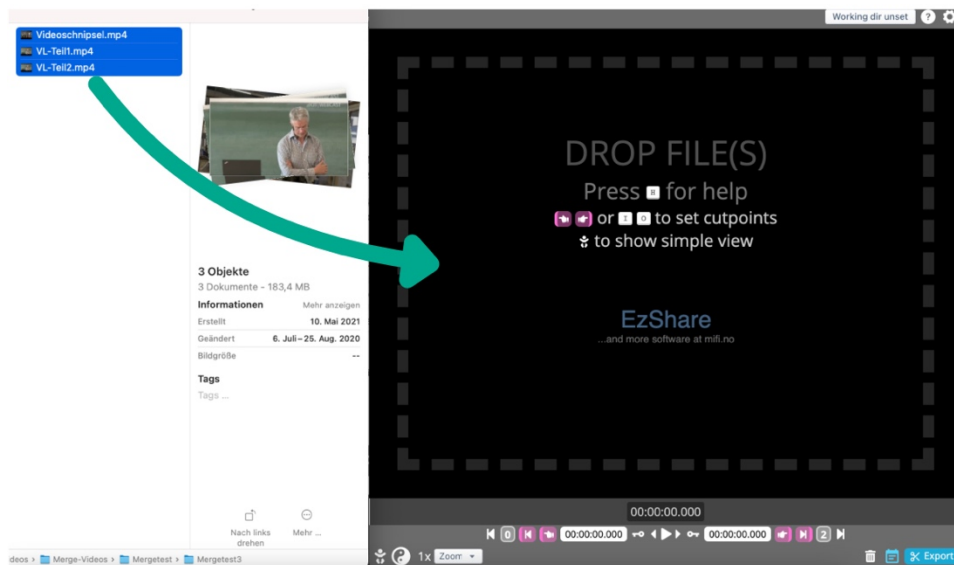
Within a short time, the clips will be saved in the file directory of the original video, unless otherwise set.

Combine several video sequences into one video

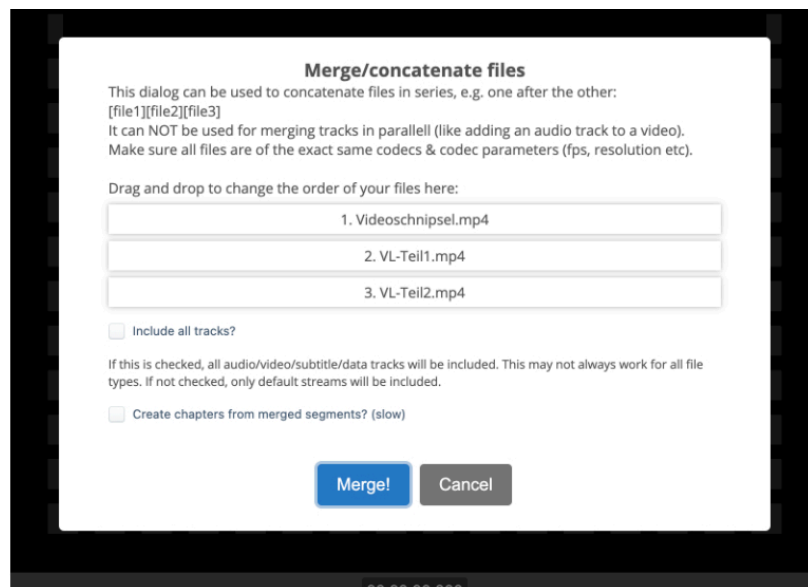
Sie Do you have several videos that you want to combine into one video?

Create a folder on your computer and collect the video sequences in this folder.

Select all the videos in the folder (by clicking on them while holding down the Shift or Control key) and drag the videos into LosslessCut all at once.



The program offers "Merge". Click on this option.



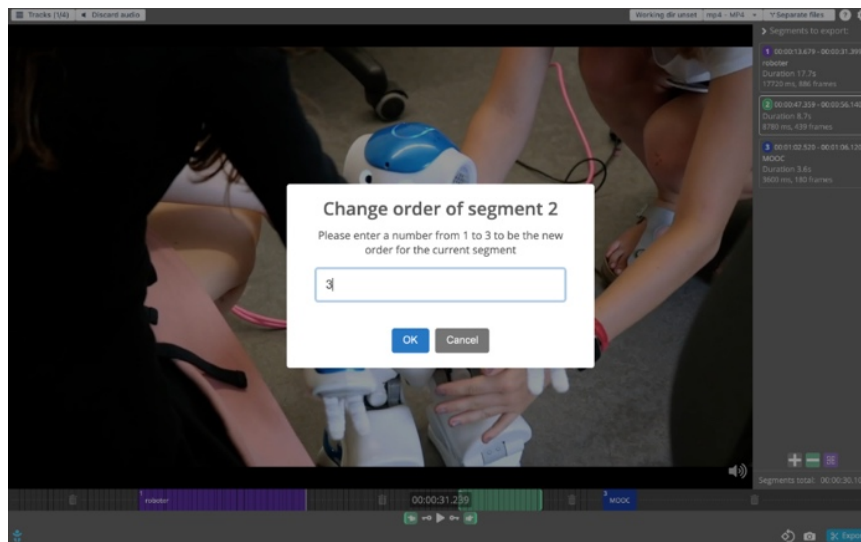
It may then take a short time until the entire video is displayed in the same file directory/folder.

You can now use the video.

If you want to change the order of the sequences, open this video again in LosslessCut.
All segments are displayed on the right-hand side of the menu. If you want to change the order of the segments, select the segment with the mouse.



The position can now be changed by right-clicking on the segment and clicking on "change segment order". To do this, enter the number of the position where the segment should ultimately appear.



The changed sequence is only displayed on the right-hand side of the menu, but not at the bottom of the bar. In the bar, the position of the segment is only indicated by a small number.

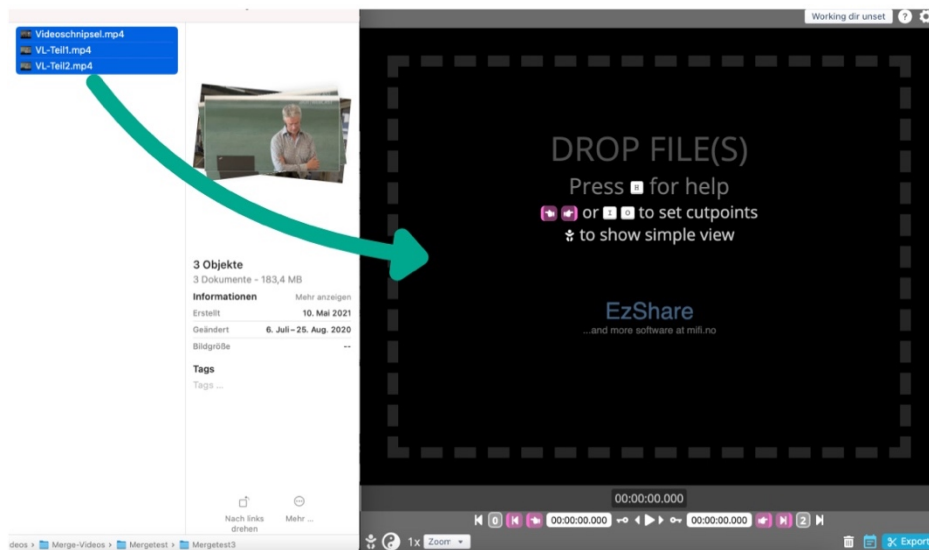


When all videos appear in the correct order, you can export. Make sure that you have previously set "Merge".

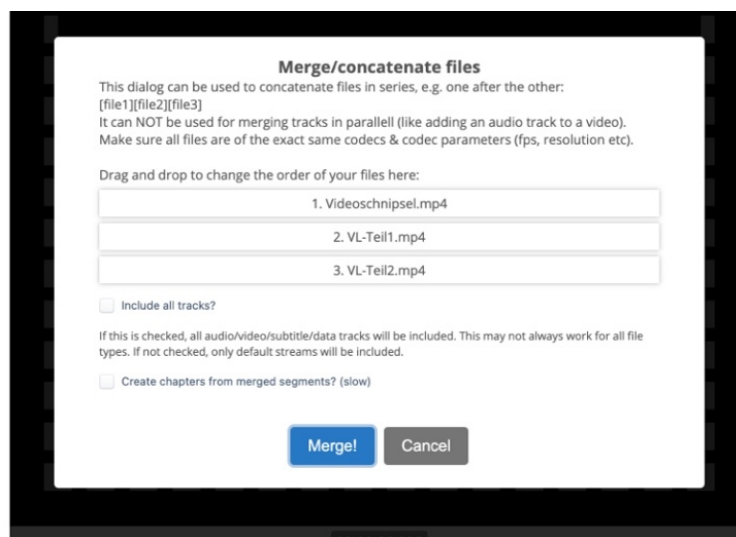
Replace a sequence from an old lecture video with a newer sequence

You have a good lecture video, but one chapter has changed. You would like to update it.

Create a folder on your computer and collect the old and the new lecture video in this folder. Select all the videos in the folder (by clicking on them while holding down the Shift or Control key) and drag the videos into LosslessCut all at once.



The program offers "Merge". Click on this option.



Open this new video again in LosslessCut.

Now you can mark the parts of the old lecture video that you want to keep at the beginning and press the I button. Then mark them at the end and press the O button. Cut the sequences you want to use from the new lecture video in the same way.



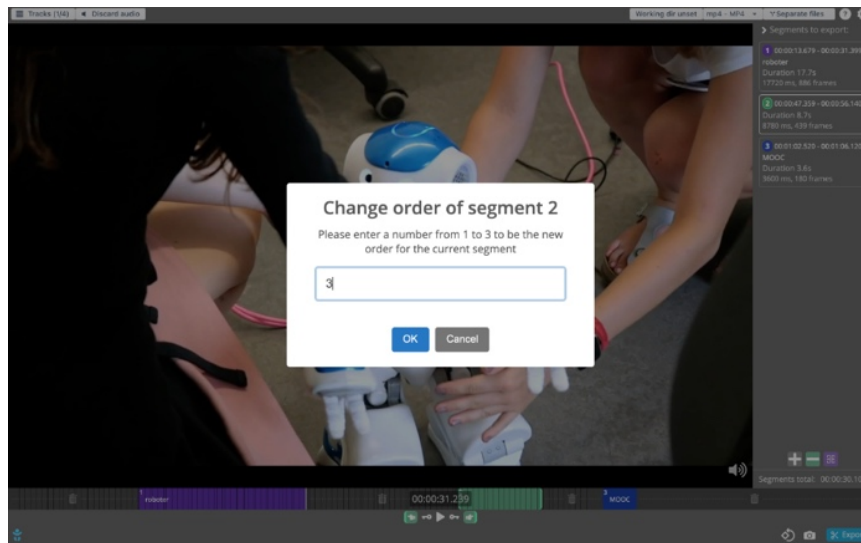
A video sequence is to begin:
Click on the desired starting point and press I (for in).
A video sequence is to end:
Click on the desired end point and press O (for out).

You will now see all video segments in the right-hand menu. The unwanted segments are no longer displayed. However, these segments must now be sorted and put in the final order.

Use the mouse to select the segment that you want to reposition.



The position can now be changed by right-clicking on the segment and clicking on "change segment order". To do this, enter the number of the position where the segment should ultimately appear.



The changed sequence is only displayed on the right-hand side of the menu, but not at the bottom of the bar. In the bar, the position of the segment is only indicated by a small number.



When all videos appear in the correct order, you can export. Make sure that you have previously set "Merge".

Troubleshooting

Loading the file and/or exporting takes a noticeably long time

Depending on the length of the original videos and also depending on the format, the merge or export process may take longer.

It is therefore advisable to only use MP4 files from the outset, if possible.

Cancellation of the loading process when pulling in several videos

If you drag several videos into LosslessCut, the loading process can take a little longer due to the length and codec. Sometimes the process is interrupted because the screen saver switches on after a short time. LosslessCut will not continue loading even if the computer wakes up from sleep mode. These interruptions can be avoided by switching off the sleep mode until the files have completed the merge process.

Next steps

- You can find out how to make the new videos visible on ILIAS here:
https://www.zml.kit.edu/downloads/Anleitung_Bereitstellung_Aufzeichnungen_ILIAS.pdf

Infos & contact

Last update 14.07.2021

License notice



These instructions for the creation of digital teaching material from the Center for Technology Enhanced Learning (ZML) at the Karlsruhe Institute of Technology (KIT) are licensed under a Creative Commons Attribution 4.0 International License.

Impressum

Publisherr Karlsruher Institut für Technologie (KIT) Kaiserstraße 12 76131 Karlsruhe

contact Karl-Friedrich-Str. 17 76133 Karlsruhe Deutschland Tel.: +49 721 608-48200 Fax: +49 721 608-48210 E-Mail: info@zml.kit.edu